

# LISTEQ CLOUD DESKTOP TECHNOLOGY

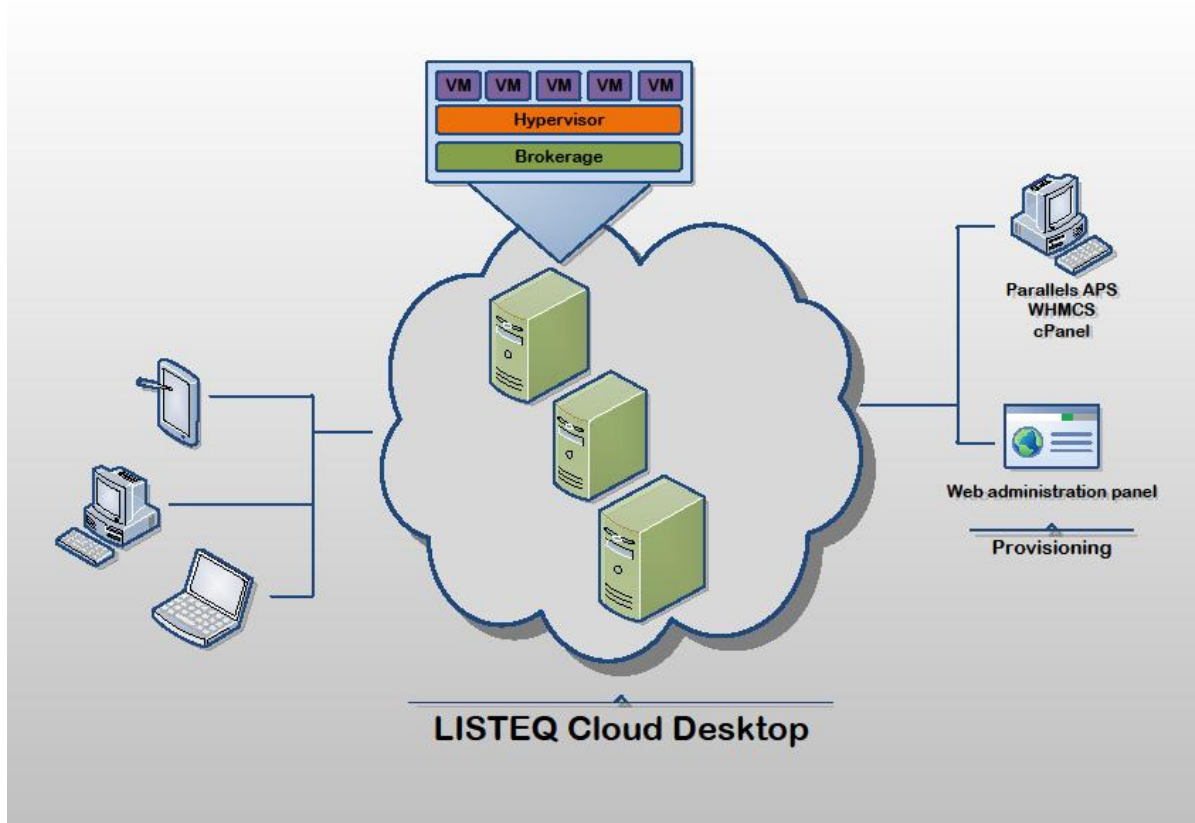
## LISTEQ CLOUD DESKTOP

LISTEQ Cloud Desktop is a software solution for Service/Hosting Providers to provide their own Virtual Desktop Service (DaaS). LISTEQ Cloud Desktop is an integrated, end-to-end solution, it includes brokerage, virtualization, management, access clients and provisioning. It provides support of all operating systems and is accessible anywhere (remote and local).

## FUNCTIONALITY

With LISTEQ Cloud Desktop, Service/Hosting Providers have an easy way to provide a fully integrated, end-to-end Desktop experience to their end-users (DaaS).

Service/Hosting Providers don't have to worry about procuring and installing complex software systems to deliver Virtual Desktops to their end-users. They only have to provide the hardware (off-the-shelf servers) on which the LISTEQ Cloud Desktop software is installed and can immediately start provisioning end-users.



LISTEQ Cloud Desktop's architecture comprises of server(s) running a hypervisor and the Virtual Machines (native hypervisor is Oracle VirtualBox). It runs on top of the native I/O layer of the hypervisor (not using any client agents or VM RDP stack), therefore LISTEQ Cloud Desktop can support any OS running within the hypervisor. Running VMs based on Windows, Linux, ChromeOS, DOS, Mac OS X and even Android x86 are possible.

# LISTEQ CLOUD DESKTOP TECHNOLOGY

LISTEQ Cloud Desktop works on any x86 compatible server. Recent Intel based hardware (i5, i7 or comparable Xeon CPU(s)), fast persistent storage, sufficient RAM and fast internet uplink are recommended to provide optimal user experience.

Multi-tenancy is achieved as each desktop is running in its own Virtual Machine, providing complete isolation at the (virtual) hardware level. A single server can support multiple different customers securely.

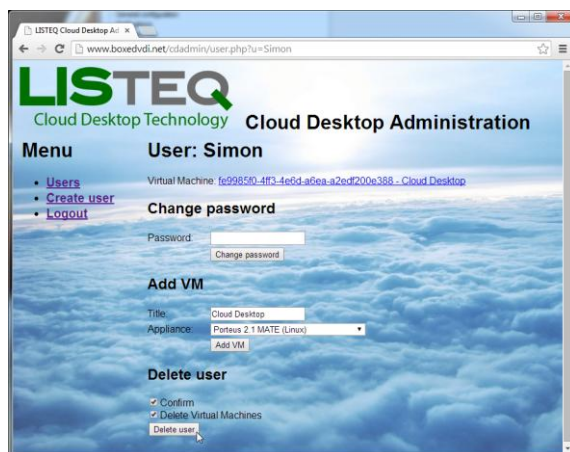
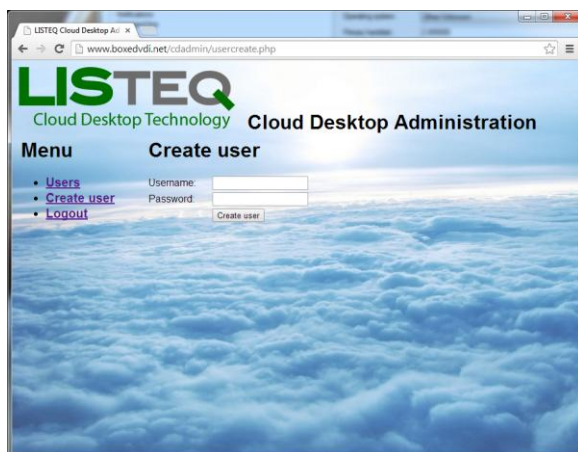
## CLIENTS - BYOD

Service/Hosting Providers can provide their end-users a persistent (dedicated, personalized) Desktop that can be accessed from a variety of devices such as a standard desktop or laptop computer (Windows, Mac), iPad or Android tablet. The end-user's applications and data stay the same regardless of which device they use, so they can easily switch between devices without losing their work.

For remote access LISTEQ Cloud Desktop uses its own proprietary RSP protocol. This allows a more efficient operation at a lower level compared to traditional VDI/DaaS solutions, providing an ultimate multimedia experience.

LISTEQ Cloud Desktop comes standard with BYOD-Clients for all platforms, including Windows (all OS), OS X, Android, iOS and Linux Ubuntu. It also has a complete integrated HTML5/Websocket client-server engine, making native HTML5 communication with its core possible. No additional gateways are needed to set up a BYOD infrastructure based on HTML5.

## PROVISIONING



Complete provisioning of end-users is included with LISTEQ Cloud Desktop. A standard web-interface and integrations with various control panels are available, such as Parallels (Panel/Automation), WHMCS, cPanel and others. Independent of the control panel, the Service/Hosting Provider can seamlessly integrate with LISTEQ Cloud Desktop. They only

## LISTEQ CLOUD DESKTOP TECHNOLOGY

have to provide a user-account with appliance in their provisioning system and fully operational Virtual Desktops are directly available.

Virtual Machines are deployed from an OVF appliance, which can be built in most virtualization software (VirtualBox, VMWare). The Service/Hosting Provider can preinstall applications in the OVF appliance used to deploy the virtual machine. End-users can install applications as usual, as they can have full administrative access on their desktop environment.

Desktops can be grouped in virtual networks, and optionally can connect to an existing network using a VPN. Virtual Desktops can integrate with existing directory services and application infrastructures at the OS level, just like physical computers.

Automation supports provisioning of single-user environments. An API is available for more advanced configurations.

### COSTS

The big advantage of LISTEQ Cloud Desktop for end-users is that it eliminates the need for up-front investments and ongoing management of infrastructure. It provides end-users with an easy, cost-effective way to have a secure and broadly accessible Desktop experience. For a low monthly fee Service/Hosting Providers can provide a complete cloud-based Desktop computing service (DaaS). End-users get a better experience than a traditional Desktop with more functionality, such as the ability to access their applications and data from the device of their choice (BYOD).

The number of VMs/users in use by the Service/Hosting Provider is automatically reported to LISTEQ. Limitations on resource usage by individual customers (RAM, disk, CPU) are defined by the provisioning system.

### FEATURES



#### **Integrated, end-to-end solution**

LISTEQ Cloud Desktop is a fully integrated, end-to-end solution. It includes brokerage, virtualization, management, access clients and provisioning. Service/Hosting Providers only have to provide an off-the-shelf server and with the LISTEQ Cloud Desktop software they can directly deliver their DaaS.



#### **Quick and Easy**

To get started, Service/Hosting Providers only need two things: an off-the-shelf server and the LISTEQ Cloud Desktop software. Just load the software on the server and they are ready to go.

## LISTEQ CLOUD DESKTOP TECHNOLOGY



### **Scalability and Multitenancy**

A Service/Hosting Provider can start small with one or two servers and grow by simply adding more servers to the grid. Each end-user receives a persistent Desktop for optimal security while Service/Hosting Providers are able to manage multiple end-users as well as multiple client-organizations from one platform.



### **Ultimate BYOD**

End-users have the freedom to work from anywhere and access their Desktop from any device, including tablets such as Apple iPads and Android tablets, smart-phones or their home PC. LISTEQ Cloud Desktop is delivered with BYOD-Clients for all platforms.



### **Simple provisioning**

Provisioning a Desktop with LISTEQ Cloud Desktop software is very simple. All a Service/Hosting Provider has to do is provide a user-account (username, password and appliance) and enter this in the provided web-interface for Provisioning. LISTEQ Cloud Desktop also has integrations with commonly available provisioning tools, like Parallels (Panel/Automation), WHMCS, cPanel, etc.



### **Minimal costs and Pay as You Go**

The all-in-one solution simplifies DaaS and delivers high availability without additional infrastructure. With a few clicks the Service/Hosting Provider can provision the number of Desktops required and both the end-user and the Service/Hosting Provider only pay for what is used.